

## Alternative music scheduler for RadioMan



### Unique highlights

- Easy transfer of GSelector schedules, database and audio files to RadioMan
- Eliminates the need for manual database rebuild for RadioMan
- Maintains established workflows
- Single click import operation

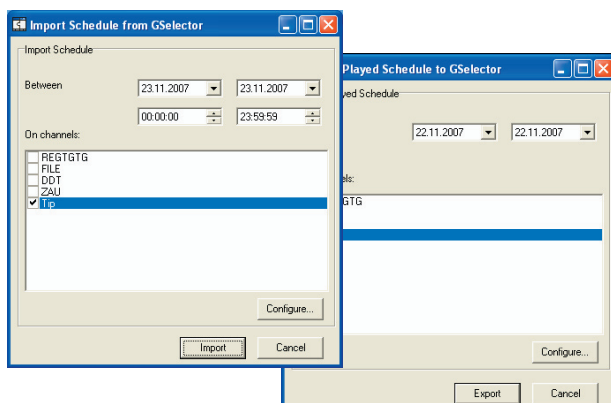
For many broadcasters Selector and its latest version GSelector is the music scheduler of their choice. They may have invested in music database creation and music classification a lot of time and energy and do not want to do it again for a sake of new radio management solution. RadioMan GSelector interface helps you overcome this problem.

### Keep costs under control

With the RadioMan GSelector Interface you can integrate your music existing Selector based music scheduling process seamlessly to the RadioMan scheduling workflow. There is no need for costly and time-consuming rebuild of your music and promo database.

This RadioMan tool allows all music items to continue to be maintained and stored in the GSelector solution. When new songs are added to Selector, they can easily be transferred to RadioMan.

RadioMan compares this Selector database export file to its own database and updates any information that has been changed. If there are new song entries, they are inserted as new entries to the RadioMan music database as well.



### Continuity of workflows

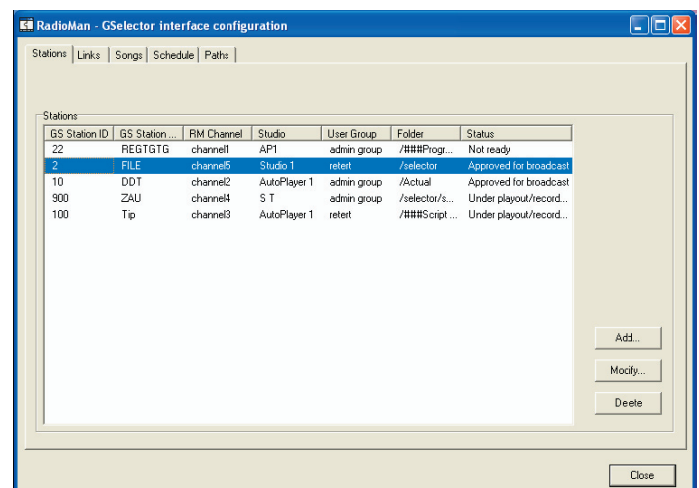
Selector users continue scheduling the music and promos in GSelector as they've used to. Thanks to the automated processes the audio files, metadata and schedules can be handled in Selector and transferred to RadioMan. Automatic audio conversion is automatically processed for audio files that are in different format than RadioMan's default one.

RadioMan will naturally build "as played" logs to be sent back to Selector. In Selector the established music scheduling routines remain the same. There is no need for reformulating operations or retraining staff.

### Support for multiple radio channels

RadioMan GSelector Integration supports both one channel and multiple channel installations. One single RM database can handle playout schedules for different radio channels which all can share the same audio and music items.

Using GSelector schedules for playlist design and on-air playout in Jutel RadioMan is only a single click away.





# GSelector Interface



## Features in brief:

- Integrated GSelector DB import function imports music, audio and link data from Selector database to RadioMan
- Imports GSelector schedules to RadioMan playlists
- Reports RadioMan playout history accurately back to Selector for reconciliation
- Selector Schedules and RadioMan Music database can be automatically updated to all remote RadioMan sites
- Export the modifications for music and audio in RM back to GS

## Workstation requirements:

	Minimum	Recommended
CPU	Single code CPU	Dual-core CPU
RAM	1 GB	2 GB
HDD	100 GB	200 GB or more
Display adapter	1024*768 or better	1024*768 or better
Network adapter	100 Mbits Ethernet	100 Mbits or 1 Gbits Ethernet
Peripherals	-	-

## System architecture:

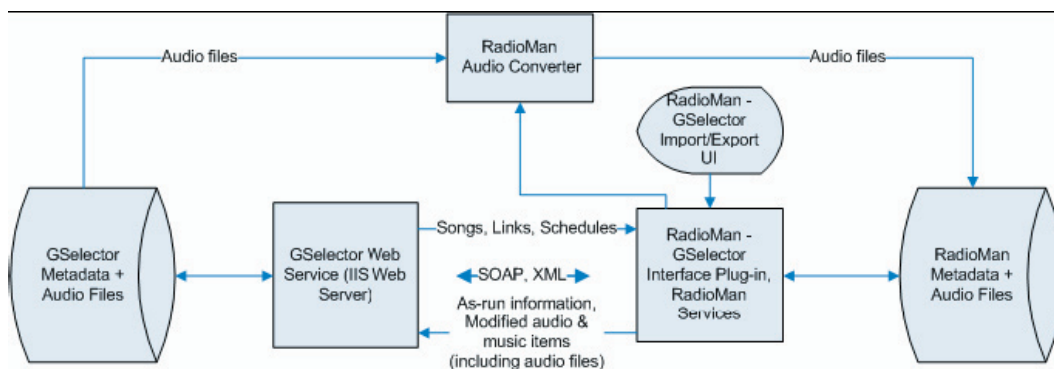
- GSelector Web Service SOAP API running on the Microsoft IIS Web Server
- RM integration server software:
  - communicates with the GS Web Service and updates information (music, audio, schedules) to the RM database and playlists
  - Exports "as-run" playout information from RM back to GS
  - Transfers also audio files from GS to RM whenever a new file is created or existing file is modified
  - Exports the modifications for music and audio in RM back to GS
- RadioMan – GSelector Import/Export GUI
- RadioMan Audio Converter converts audios from the GS format to the RM primary format

## Optional hardware:

	Recommended	Alternative
Sound card	Digram PCX924HR/e	Any compatible sound board
Special controllers		RM Edit Keyboard ShuttlePro

## Software requirements:

	Recommended	Alternative
Operating system	Windows XP Professional	Windows 2003 Server
Sound card driver	Digram HR Runtime 1.72d	
Database client	none	IBM DB2 UDB v9.5



RadioMan is a registered trademark of Jutel.  
 IBM is a registered trademark of International Business Machines Corporation.  
 DB2 is a registered trademark of International Business Machines Corporation.  
 Windows 2000 and Windows XP are registered trademarks of Microsoft Corporation.  
 RCS selector is a registered trademark of RCS Inc.  
 Other company, product and service names may be trademarks, or service marks of others.

