

RadioMan-ENPS Newsroom Integration

Capture

Manipulate

Working seamlessly with the ENPS newsroom system



Unique highlights

- Real-time updates from newsroom to broadcast studio
- Easy playout control in On-Air studios
- Comprehensive search facilities
- Integrated audio editing
- Easy exchange of rundowns and audio files between sites.
- Stable and reliable

The ideal workflow

RadioMan integration with ENPS is specifically designed for the modern radio newsroom.

The integration of these two systems allows journalists working with any news terminal to easily produce scripts, audio clips and rundowns for the shows played out in RadioMan. And, production is flexible - the whole program can be either prepared in the newsroom system or the RadioMan desktop.

The basic workflow of processing incoming wires, production of scripts, messaging and directory management is similar to a standard news system installation. The ENPS desktop is enhanced with audio editing and search functionality, so that multimedia-type scripts containing both text and audio material can be produced. Audio recording and editing can be done with Jutel Quick Edit Pro, embedded as an ActiveX component into ENPS.

Smart archives and flexible On-Air control

When a story breaks, you need to be able to access archive files quickly. RadioMan has very efficient retrieval functions as well as a centralised search facility that allows users to locate stories easily.

Playout control in the On-Air studio is easy. Texts of the stories in the RadioMan running order can be read directly from the monitor while on air. RadioMan automatically updates story slugs and the links to audios contained in the story when they are received from ENPS to RadioMan.

Keep pace with breaking news

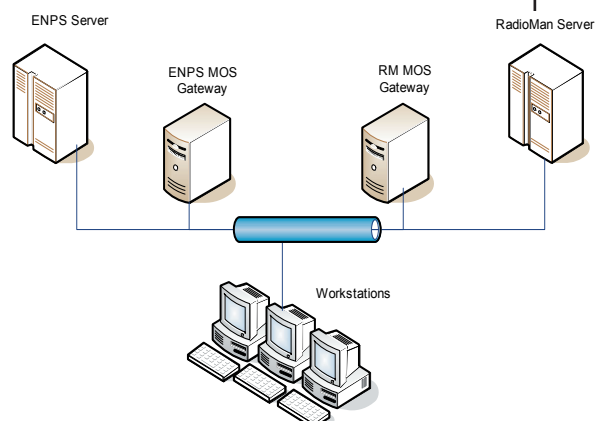
Even shows that are already being broadcast can be edited from any authorised ENPS workstation in the RadioMan network. All changes to the show are transferred in real-time from the newsroom to the On-Air studio. The producer working with the show at any ENPS workstation can monitor directly the On-Air playout status from the ENPS rundown.

RadioMan has been designed to integrate seamlessly with ENPS at server level. Exploiting MOS 2.8 (Media Object Server), a communications protocol for newsroom computer systems and production, it provides the very stable operating environment required by live broadcasters.

Produce once, utilize at any site

RadioMan ENPS integration supports MOS redirection feature, which allows easy material transfer between different ENPS sites. When ever a story or a rundown is copied to another site, all related audio is automatically copied to the target site RadioMan system and is immediately ready for playout.

All these functions, and more mean that RadioMan is the ideal choice for the newscaster who wants to boost editorial quality, save time and streamline operations.





RadioMan- ENPS Newsroom Integration



Features in brief:

- Seamless integration with ENPS
- Jutel Quick Edit Pro is embedded into ENPS as an ActiveX component
- Full RadioMan audio search facilities within ENPS.
- News rundowns can be created in ENPS and automatically transferred into RadioMan:
 - real time updates from ENPS to on-air rundowns open in RadioMan
 - on-air status monitoring in ENPS
- Audio files can be published to ENPS from any RadioMan workstation. Even workstation without ENPS software.
- MOS Redirection enables you to transfer material between different sites. Audio will follow stories to the destination automatically
- MOS status indication
- Automatic and manual publishing
- Multi ENPS server support
- ENPS Buddy support
- Multi-channed/services support

Workstation requirements:

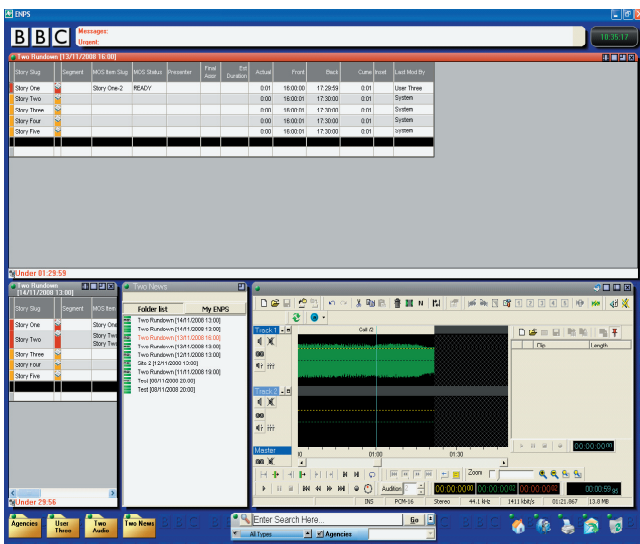
	Minimum	Recommended
CPU	Single Core CPU	Dual-core CPU
RAM	1 GB	2 GB
Network adapter	100 Mbits Ethernet	100 Mbits or 1Gbits Ethernet

Software requirements:

	Recommended	Alternative
Operating system	Windows XP Professional	Windows 2003 Server
ENPS Newsroom system	v6.0	v5.0
Database client	none	IBM DB2 UDB v9.5 client

Optional hardware:

	Recommended	Alternative
Sound card	Digigram PCX924HR/e	Other compatible soundboard
Special controllers	ShuttlePro	RM Edit Keyboard



RadioMan is a registered trademark of Jutel.
 IBM is a registered trademark of International Business Machines Corporation.
 DB2 is a registered trademark of International Business Machines Corporation.
 Windows 2000 and Windows XP are registered trademarks of Microsoft Corporation.
 ENPS is a registered trademark of the Associated Press.
 Other company, product and service names may be trademarks, or service marks of others.

